

BeamOn U3 Pro - E

NEW



Specifications

- Innovative Beam Profiler (1.1")
- 40 Hz
- High resolution (1.77 MPixel) **16 bit** dynamic range
- USB 3.0
- Complete test station with built-in motorized Filter Wheel and full set of accessories
- Multiple active areas for multi beam analysis
- Versatile - Measures **Profile, Power and Position**

Laser Type	CW & Pulsed
Beam Width Resolution	1 micron or better
Resolution (H x V pixels)	1600 x 1100 (Global Shutter)
Beam Size	ø100 µm - ø9 mm
Spectral Response	350 – 1350 nm (VIS NIR), 190-1350 nm (UV)
Sensor Active Area (mm)	14.5 x 9.9, sensor can be divided into multiple active areas, working in parallel for up to 400 sectors (NEW)
Gain Control	User Selectable
Dynamic Range	60 dB, 16 bit
Exposure	32 µsec to 2 sec
Frame Rate	40 fps (8 bit) 30 fps (16 bit) AIO (64x40) 397 fps, AOI (120x80) 240 fps, AOI (240x160) 190 fps
Pixel Size	9 µm x 9 µm
Pixel Bit Depth	16 bits

Beam width accuracy	±1.5%
Synchronization	•Software trigger
Exposure & Gain Control	Programmable via GUI
Accessories	-IR Edge Filter -SAM3-C -RDC -C-Mount Filter
Power Requirements	~2 Watt (Via USB 3.0 interface)
Housing Size (L x W x H) in mm	64 x 46 x 73.5
Weight (typical)	300 gr.
Min. Hardware Requirements	CPU i5 1.6 GHz, 8 GB RAM
Interface	USB 3.0, windows 8/10/11 (32 & 64 bit)
Mechanical Interface	Post mounting: 2 concentric opposite 8-32 UNC 6 mm depth at the detector plane Optical attachments & filters: C-mount
Built-in Automatic filter wheel	With mounted filters: ND8, ND200, ND1000, one unpopulated. (UV Version comes with additional UV Bandpass Filter at position #1)

Wavelength	633	980	1310
Saturation	20 µW/mm ²	100 µW/mm ²	0.2 W/mm ²
Sensitivity	Better than 1 nanoW/mm ²	Better than 1 nanoW/mm ²	70 µW/mm ²

Ordering Information

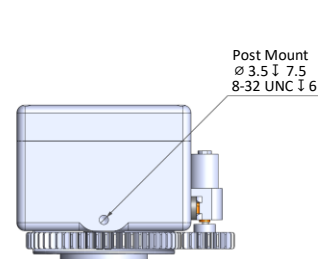
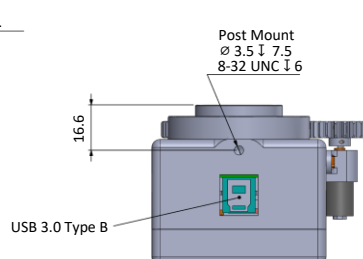
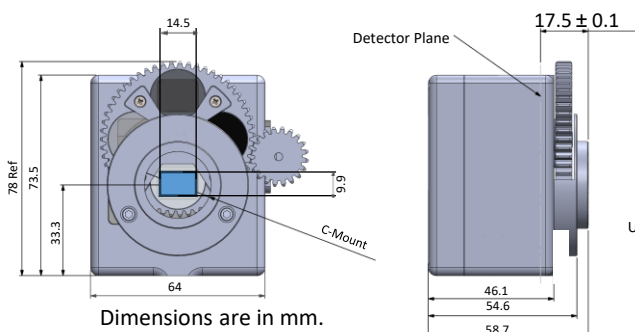
BeamOn U3 Pro-E: A camera for 350 – 1350 nm with motorized built-in filter wheel, USB3.0 cable 1.8 meters long, application software on CD/Flash Disk, mounting post, 35 mm hood for ambient light obstruction, carrying case.

SAM3-C: Attachment for high power lasers attenuation (up to 20 W)

RDC: Attachment for beam reducer (ratio 2x1)

BeamOn U3 Pro-E-UV: A camera for 190 – 1350 nm with motorized built-in filter wheel, USB3.0 cable 1.8 meters long, application software on CD/Flash Disk, mounting post, 35 mm hood for ambient light obstruction, carrying case, additional UV filter at position #1.

IR-Edge Filter: C-mount filter for IR Edge.



DUMA OPTRONICS LTD.

Website: <http://www.dumaoptronics.com>

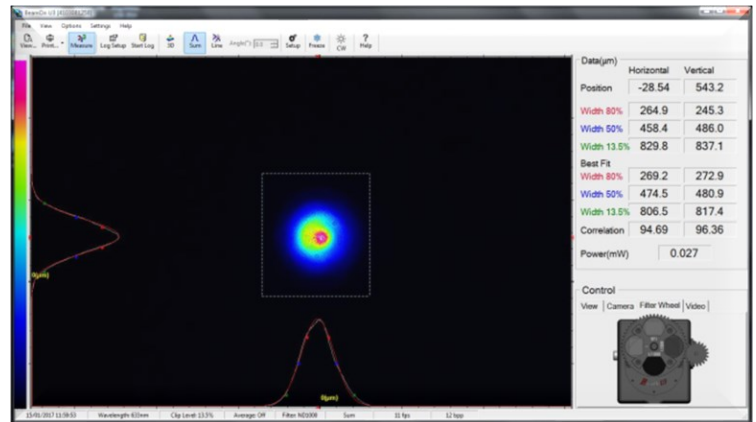
E-mail: sales@duma.co.il

March 2024



BeamOn U3 Pro - E

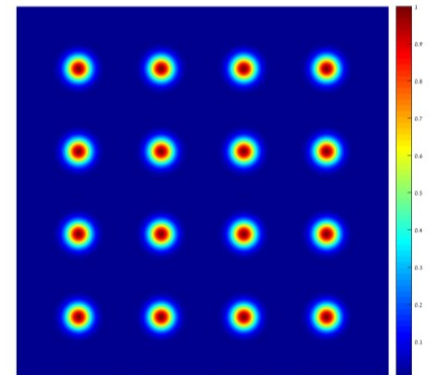
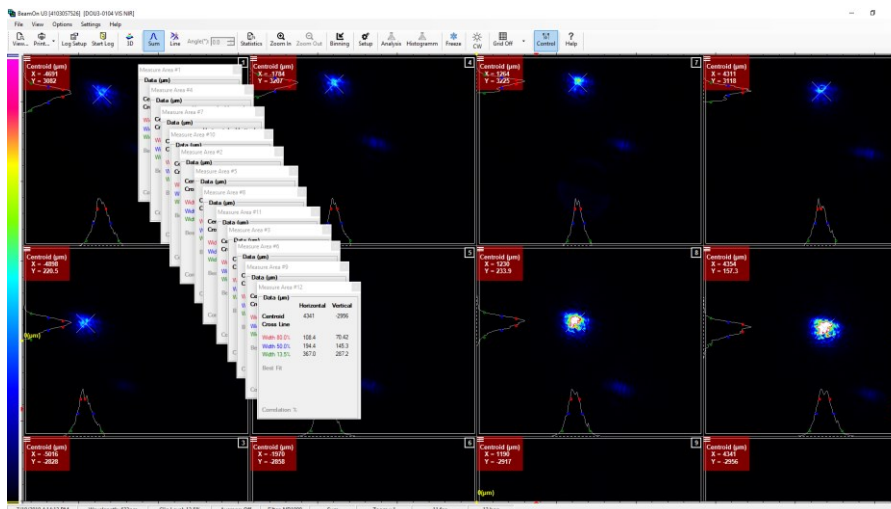
NEW



- Real-Time Calculation & Display of Beam Profile, Beam Size, Gaussian Fit and Top Head
- TCP/IP, DLL Communication Protocols
- PASS/FAIL Testing

Multi-Beam Analysis

Up to 400 Independent Beams Analysis



- Simultaneous independent beam profiles
- Interposition of each beam's center of energy
- Detailed test report in a table format

DUMA OPTRONICS LTD.

Website: <http://www.dumaoptronics.com>

E-mail: sales@duma.co.il

March 2024

